

Financial Report

- 2023 -



国立大学法人 **奈良先端科学技術大学院大学** <http://www.naist.jp/>

無限の可能性、ここが最先端 *- Outgrow your limits -*

Financial statement highlights for FY2022

Balance Sheet (summary)

(in million of Yen)

Assets	FY 2022	FY 2021	Change from previous year	Liabilities		
				FY 2022	FY 2021	Change from previous year
Fixed assets						
Land	9,276	(9,276)	0	Contra-accounts for assets	0	(3,212) ▲ 3,212
Buildings and structures	10,394	(10,901)	▲ 507	Management expense grants	262	(0) 262
Tools, furniture and fixtures	2,864	(2,798)	66	Liabilities		
Books	491	(514)	▲ 23	Donation liabilities	701	(679) 21
Investment securities	200	(200)	0	Liabilities for commissioned research	357	(371) ▲ 14
Other fixed assets	205	(149)	56	Accounts payable	1,991	(2,138) ▲ 146
Total (Fixed assets)	23,434	(23,841)	▲ 406	Other liabilities	334	(401) ▲ 66
				Total (Liabilities)	3,647	(6,803) ▲ 3,156
Current assets				Net assets		
Cash and deposits	3,167	(2,942)	224	Capital stock	18,624	(18,624) 0
Accounts receivable	135	(161)	▲ 25	Capital surplus	86	(584) ▲ 497
Other current assets	23	(17)	5	Earned surplus	4,402	(948) 3,453
Total (Current assets)	3,326	(3,121)	205	Total (Net assets)	23,113	(20,158) 2,955
Total (Assets)	26,761	(26,962)	▲ 201	Total (Liabilities and net assets)	26,761	(26,962) ▲ 201
				Unappropriated retained earnings	3,494	(361) 3,132

<Assets>

Buildings, structures, etc. decreased by about 500 million yen from the previous year, but this is due to the fact that capital investment has not kept pace with depreciation and amortization expenses, indicating that facilities are aging.

Income Statement (summary)

(in million of Yen)

Expenses	FY 2022	FY 2021	Change from previous year	Revenues		
				FY 2022	FY 2021	Change from previous year
Ordinary expenses				Ordinary revenues		
Education	561	(565)	▲ 3	Management expense grants	5,795	(5,213) 582
Research	1,287	(1,343)	▲ 55	Student fees	661	(646) 14
Support for education and research	1,058	(1,054)	4	External funding income	2,570	(2,210) 357
Commissioned research	1,491	(1,445)	46	Reversal of contra-accounts for assets	0	(465) ▲ 465
Personnel expense	3,937	(3,848)	89	Other ordinary revenues	257	(175) 82
General and administrative expenses	338	(302)	35	Total (Revenues)	9,286	(8,713) 572
Other ordinary expenses	42	(29)	12	Ordinary revenue	567	(125) 442
Total (Expenses)	8,718	(8,588)	129	Extraordinary profit	2,906	(24) 2,882
				Reversal of reserve for specific purposes	20	(212) ▲ 192
				Gross profit	3,494	(361) 3,132

<Expenses>

As a result of our efforts to improve long-term financial balance, educational and research expenses are lower than the previous year, while personnel expenses increased.

<Extraordinary Profit>

Due to a change in accounting standards, the entire asset return liability was transferred to extraordinary income, resulting in a temporary large amount of profit that would not occur in a normal year.

Example of projects implemented in FY2022 (Operational grants - priority strategic expenses)

About the President's Vision 2030

These four 'Visions' establish our institutional direction, with the sixteen mid/long-term 'Goals' that must be met in order to achieve the Visions in 2030 through the measures and actions detailed in the sixteen 'Strategies'.



Vision	Example of activity	Amount
	Through the assignment of UEAs and other measures, we will promote innovation education and provide career support, aiming to nurture human resources who are sought after and active in diverse areas of society.	31.9 million yen
	Aim to cultivate internationally-minded human resources by expanding the dispatch of students overseas and implementing international co-curricular programs with overseas academic exchange partner universities.	60.2 million yen
	Support research funding for co-creation research projects that incorporate social scientific perspectives to solve issues such as SDGs and carbon neutrality.	13.1 million yen
	Promote the integrated digitization of education, research, and institutional operations to improve the efficiency of student and faculty education and research activities, and the efficiency of faculty and staff duties.	5.0 million yen

Examples of projects implemented in FY2022 (Other financial resources)

Education

Innovation Fellowships (Proceeds from subsidies)

- Fellowships consisting of a research grant (150,000 yen/month) and research expenses (200,000 or 450,000 yen/year) are awarded to 40 doctoral students who have excellent research skills and wish to devote themselves to research.



Research

Light Emitting Plant (Grants for commissioned research)

- In joint research with Osaka University, a gene for luminous mushrooms was introduced into plants. It is expected to be used for street trees and indoor lighting in the future. In addition, a venture company has recently been started for commercialization.



Industry-university collaboration

Craft beer commercialization (Donations)

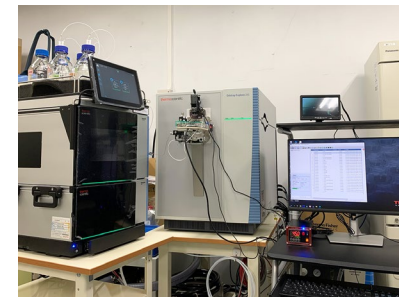
- In collaboration with Nara City's Golden Rabbit Beer Company, we brewed and commercialized "Unebiyama" and "Miminashiyama" craft beers with our original yeast. Together with "Kaguyama," which had already been commercialized, the Yamato Sanzan series was completed.



Facilities

1 Cell Analysis Collaborative Use System (Operational grants)

- Aiming to accelerate bioscience research and drug discovery research, strengthen industry-academia collaboration with neighboring companies, etc., and foster bioscience human resources, a system to elucidate cell characteristics at the single cell level was introduced.



Financial management issues in FY2022

- ❑ Decrease in basic operating subsidy
Decrease of 40 million yen each year
- ❑ Soaring electricity prices
R3':240 million yen, R4':490 million yen, R5':600 million yen
- ❑ Increase in personnel costs
Increase of 30 million yen each year due to regular salary increases
- ❑ Other
Rising costs of e-journals, renewal costs due to ageing facilities, etc.

Questionnaire

Please answer a simple questionnaire.



<https://forms.gle/5yEaYcHDV7HA7WRN7>